

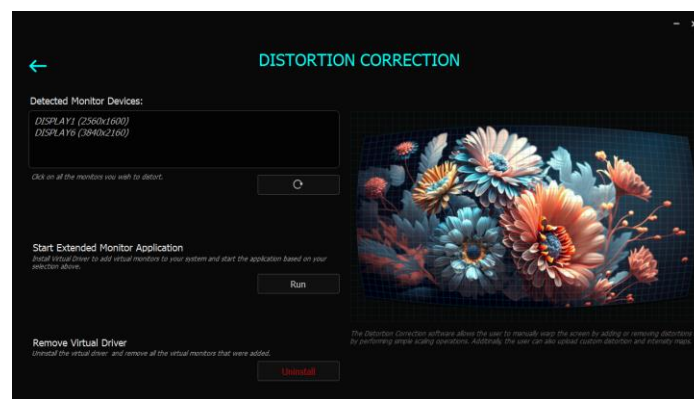
Brelyon Suite – How to use?

Using Brelyon Suite you can manipulate your Desktop experience in various ways. In this version you will have access to the “basic” features which are

- Distortion Correction
- Merging Monitors and
- Splitting Monitors

We do this by creating a virtual monitor and projecting it on top of your real Desktop screen. In the following sections, you will learn how to use Brelyon Suite.

Distortion Correction

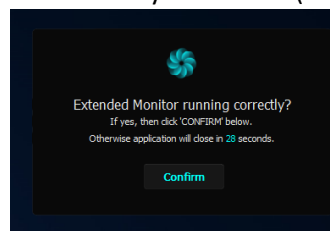


1. Select target monitors:

Under “Detected Monitor Devices” you will see all the listed monitors that are currently connected to your computer. You can then select the monitors (up to four) you wish to distort. Once you select a monitor from the list, that selected monitor will be visibly marked by a green frame. If you deselect a monitor, it will be marked by a red frame. This will help you identify the different monitors. If you change the display setting (like changing the resolution or removing a monitor), this list will update automatically. If not, you can click on the refresh button beneath the list.

2. Run Extended Monitor:

After selecting the monitors, click the “Run” button to create the virtual monitors. It can take several seconds until the installation is complete. Once it is done the Extended Monitor application will start and you will see your distorted screen. The first thing you have to do is find the dialog window positioned in the center of your screen (see screenshot below).



If you do not click the “Confirm” button, the Extended Monitor application will close and you will be transported back to your real display with the still running Brelyon Suite. This is a safety measure to ensure that you can see your virtual monitor.

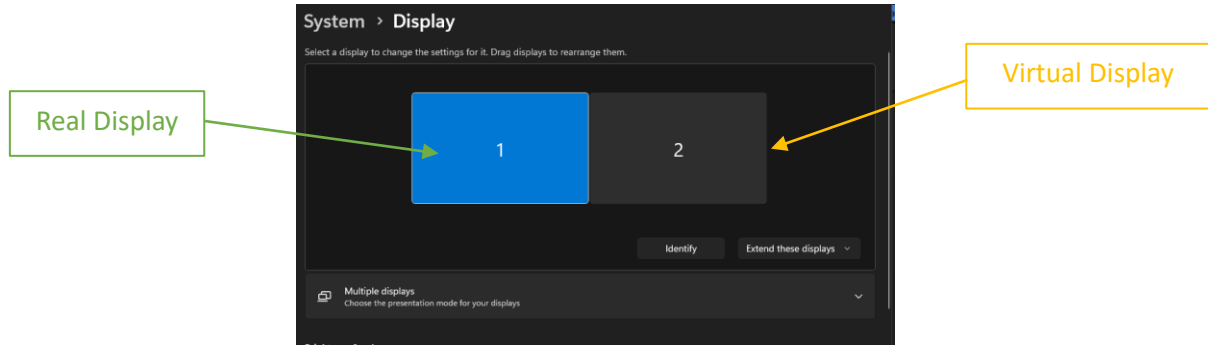
After clicking the “Confirm” button, you will see the control panel which provides you with a variety of interaction possibilities:

- I. Distortion Level controls the level of distortion
- II. Scale Level controls the size of the screen.
- III. Clicking the “Intensity” button allows you to change the intensity map. We have already provided an intensity map in the folder [“bin\extendedmonitor\intensitymaps”](#). The default is [“nointensity.png”](#). You can customize your own intensity maps by opening [“nointensity.png”](#) in any image editing software and drawing on it with black color. See [“brint_int1.png”](#) for reference. If you add another intensity map you MUST add it to the folder [\intensitymaps](#).
After applying a new intensity map you will have to again confirm that the Extended Monitor application is running correctly. Look for the control panel and click the “Confirm” button. You have 30 seconds to click the button. Otherwise, the Extended Monitor application will close.
- IV. Clicking the “Distortion” button allows you to apply a distortion map instead of manipulating the distortion in the Distortion Level field. We have already provided several distortion maps in the folder [“bin\extendedmonitor\distortionmaps”](#). You can customize your own distortion map by opening [“brgrd_0_0.jpg”](#) and applying *barrel* or *pincushion* distortion operations on it. If you add another distortion map you MUST add it to the folder [\distortionmaps](#).
After applying a new distortion map you will have to again confirm that the Extended Monitor application is running correctly. Look for the control panel and click the “Confirm” button. You have 30 seconds to click the button. Otherwise, the Extended Monitor application will close.
- V. Minimize Virtual Screen allows you to minimize your Extended Monitor application and go back to your real Desktop. The control panel will travel with you and that button will be called Maximize Virtual Screen instead. Click on it to go back to your Extended Monitor.
- VI. Transfer All Windows allows you to grab all windows in the opposite Desktop and move them to the Desktop you are currently working on. Normally, this happens automatically but should you click on Minimize Virtual Screen all your other windows will still be in the virtual monitor. Clicking Transfer All Windows allows you to move these windows to your real Desktop.
- VII. Click the Info-Button to display important shortcuts.
- VIII. Clicking “x” button closes the Extended Monitor app and you will be transported back to your real display with the still running Brelyon Suite.

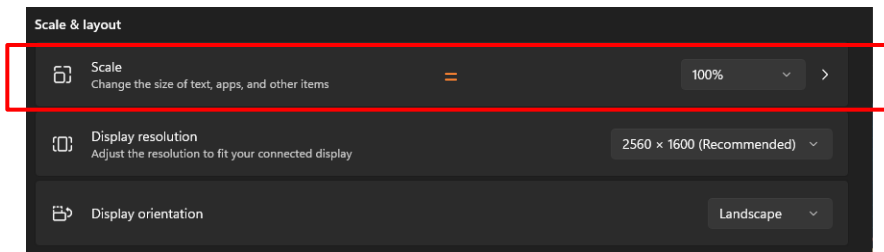


Potential problems and how to fix them:

In your Extended Monitor you will see that the **Display Settings** have opened automatically. There you will see the virtual display that was just created (see screenshot below).



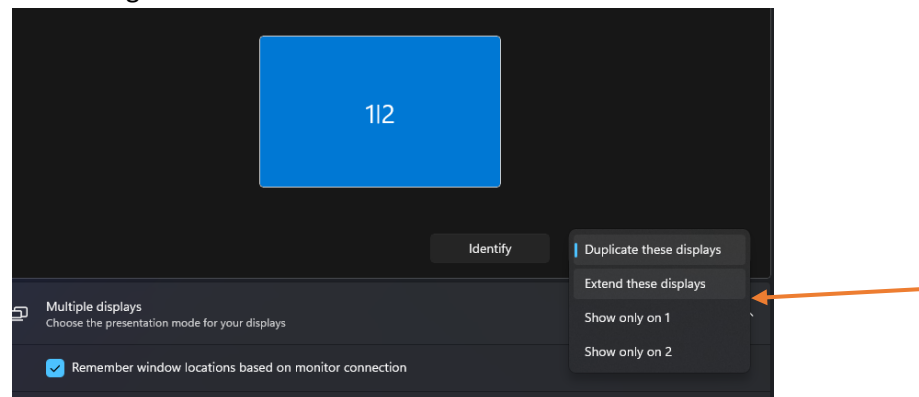
In the **Display Settings** it is recommended that the virtual display and its targeted real display have the same “Scale” value.



In the **Display Settings** you can also adjust the position of the virtual display relative to the other display which you will be using. Remember that you will only see the virtual display once you run the application. So, make sure that the other displays are positioned adjacent to the virtual display to ensure that your mouse can travel freely between them.

IMPORTANT NOTE: In the **Display Settings**, NEVER turn one of the virtual displays into a **main** or **primary display**. If you do that you might lose track of opened windows or even not see the Windows login screen.

Reasons for the installation to fail: After you hit the “Run” button you might get a message that the installation was not successful. This could be because a virtual display and a real display were duplicated. This is something that Windows sometimes does automatically. You will have to go to the **Display Settings** and un-duplicate the displays by clicking on “Extend these displays”. After that, run the installation again.

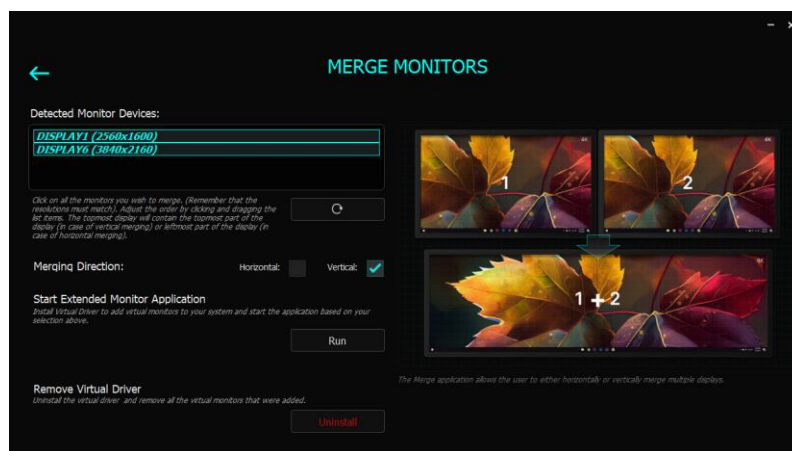


You will most likely have to make all these changes in the **Display Settings** once because Windows remembers previous display configurations.

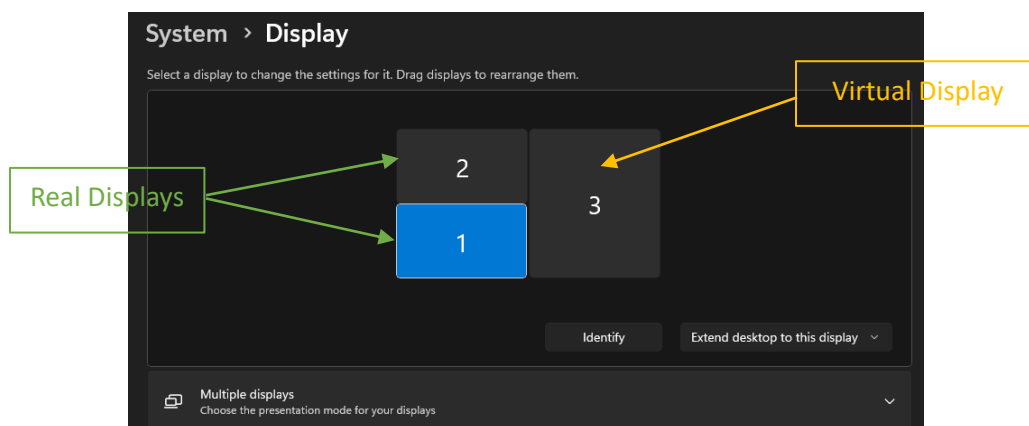
Merge Monitors

You have to select two or more monitors (up to four) that share the same resolution. Then you have to decide if you want to merge them horizontally or vertically. In the display list you can also change the order of the displays by grabbing and dropping them.

In the example seen below you can see two detected monitors and vertical merging is selected. **Display6 (1920x1080)** is the first item on the list. This means that Display 6 will contain the upper half of the merged display.



After the installation and opening the **Display Settings** you will see something similar to this:



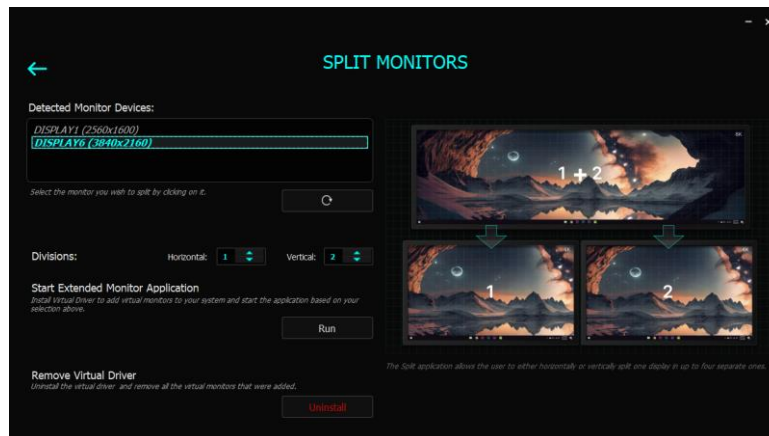
That of course will look different depending on how many displays you selected, their resolutions and the merging direction.

Everything else in this application works the same as **Distortion Correction** (see section above).

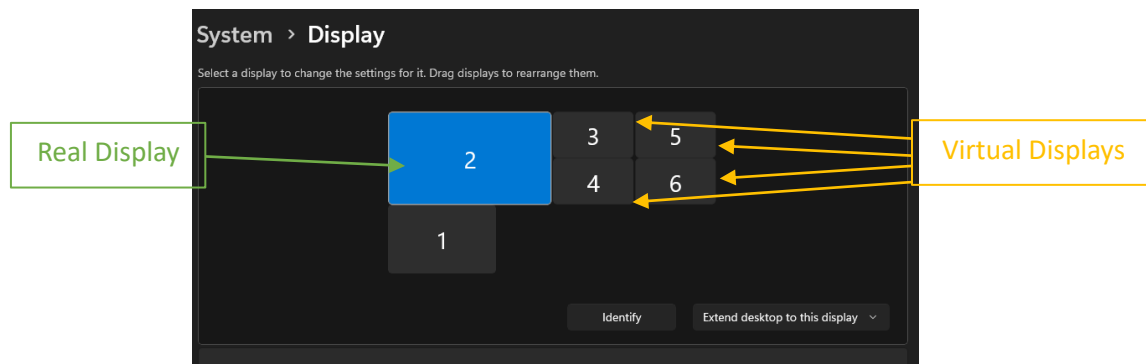
Split Monitors

You can select only one monitor and then you have to decide how you want to divide your screen (up to four divisions).

In the example seen below, you can see that a monitor with 4K resolution was selected and that it should be divided horizontally by 2 and vertically by 2. This means that you get 4 separate monitors.



After the installation and opening the **Display Settings** you will see something similar to this:



Everything else in this application works the same as **Distortion Correction** (see section above).

IMPORTANT NOTE: Performance might suffer if you add too many divisions or your resolution is too high.

Other Important Notes

Brelyon Suite always has to be running in the background. If you close Brelyon Suite, any Extended Monitor application will close and the virtual displays will be deleted.

It is recommended that you delete all Virtual Desktops (WIN + TAB) before starting the application.

Shortcuts to remember:

While Brelyon Suite is running in the background, you will have access to these keyboard shortcuts:

STRG + SHIFT + D: Delete all virtual displays and close the Extended Monitor application. Very Useful in case your application crashes and you do not have access to the UI. That way you can revert everything back to the way it used to be before you installed the virtual monitors.

STRG + SHIFT + Q: Make mouse jump to a different display. Very Useful if you lose track of your mouse.